

TUF

THE ULTIMATE FINISH

ISSUE 31 MARCH 2022

A
AXALTA
axalta.com.au



IN THIS ISSUE
CUSTOMISED WHEELS
TIPS FOR WORKING WITH ELECTRIC VEHICLES
VL WALKINSHAW RESTORATION
TREATING PAINT AS A PART

Your Passion.
Our Coatings.

TABLE OF CONTENTS

- 3 Customised Wheels
- 4-5 Electric Vehicle Repairs
- 6 Fix Auto Mulgrave
- 7 Bamboo Bike Handlebars
- 8-9 WACO Plane Restorations
- 8-9 Tech Tip Global Paint Defect Videos
- 10-11 Bare Metal VL Walkinshaw Restoration
- 12 Smith & Boyle Renovation
- 13 Coach's Corner: Paint as a Part
- 14 Mercedes Benz Unique Art
- 14-15 Valueshade Turns 25
- 15 Sky Signs
- 16 WorldSkills Winner
- 16 Business Excellence Award Winner
- 17 Colour of the Year - Royal Magenta
- 18 Wallaby Crash Supplies - 30 Years
- 19 Wadley's Panel Beaters - 25 Years
- 19 Recognition Listing

Magazine Contributors

Editor-in-Chief	Steven Brett
Editorial	Rosanna Melluso
Coordinators	and Nancy Lane
Art Director	Cat Green
Copywriter	Veronica Miller

Do you have a great story?

We'd love to hear it!
Email Info-ANZ@axalta.com
or call **1800 292 582**.

Follow us on Social Media

Did you know Axalta Australia and New Zealand has a presence on multiple social media channels? Follow us today to stay up to date with the latest industry and product news.



A MESSAGE FROM THE MANAGING DIRECTOR



Your Passion. Our Coatings.

With each passing year, our customers continue to inspire us with the unique projects they complete using our coatings. Only a few months into 2022, it is clear this year is no different.

This issue features many unique uses of our coatings, ranging from bike handlebars on page 7, sky signs on page 15 and even artwork on page 14.

Our cover image this month is a VL Walkinshaw restoration from CSA Refinish (QLD) and is featured on pages 10 and 11, so you can read more about this bare metal restoration.

In this issue's Coach's Corner, we look at paint as a part and the positive implications this can have on your shop.

Finally, we are celebrating many achievements in this issue, from congratulating the winner of the WorldSkills Nationals on page 16, along with the Axalta Business Excellence Award winner, to acknowledging Wallaby Crash Supplies who have been in business for 30 years, on page 18.

Enjoy the read.

Sincerely,

Steven Brett
Managing Director
Axalta Coating Systems



Published by Axalta Coating Systems.

© 2022 Axalta Coating Systems LLC and its affiliates. Third party logos are property of their respective owners. All rights reserved.

Axalta Coating Systems 16 Darling Street, Marsden Park, NSW, 2765 **T** 1800 292 582 (AXALTA) **E** Info-ANZ@axalta.com



INDIVIDUAL LOOK WITH CUSTOMISED WHEELS

Brisbane based WheelFix, a division of the Aussie Automotive Group, are providing a unique service to their customers - cosmetic wheel repair and customised colour changes to give vehicles a truly individual look at a fraction of the cost of new wheels.

"While some in the industry focus on structural wheel repairs, we purely focus on cosmetic repairs and machined face resurfacing, which means we can turn repairs around quickly," explains Denis Flora, Head of Operations for Aussie Automotive Group.

WheelFix offers wheel repair services to private customers and smash repairers, as well as new and used car dealerships, and can tailor solutions to suit their needs, including wheel colour changes in matte, satin or gloss finishes.

The experienced team works with Syrox Waterborne basecoat system to match OEM finishes required and to achieve quality outcomes. Most recently, they completed an outstanding job for a private customer who wasn't thrilled with how the factory gloss black wheels looked on their new vehicle.

"For a new top-of-the-range Kia Carnival, the team started with the gloss black factory wheel. We added contrast by machining the face and then clearing the wheel, giving our very happy customer a whole new look," said Denis.

When the team established WheelFix, they worked closely with their Axalta Representative to develop and implement the business processes and systems.

"The team at Axalta were amazing to work with in helping us establish this offering. They were incredibly helpful in terms of problem-solving and working with our paint team to develop new colours and provide assistance to allow our team to concentrate on producing quality outcomes."

Distributor: Brisbane Refinish Supplies

Paint System: Syrox Waterborne



Above: WheelFix complete cosmetic wheel repairs.



Above: Wheel colour changes are done in matte, satin and gloss finishes.





ELECTRIC VEHICLES

- THE WAY OF THE FUTURE

Electric vehicles (EVs) are certainly becoming more popular on our roads, and while some bodyshops might not want to undertake EV repairs just yet, if you do decide to take them on, there are some things you should keep in mind.

SAFETY FIRST

When repairing EVs, technicians must follow a safety-first approach before undertaking any part of the repair. In the first instance, and very importantly, ensure the charging cable is not connected and the battery is disconnected, so that the power cannot be accidentally switched on during the repair.

While the vehicle is live, it is important to ensure high-voltage personal protective equipment (PPE) is worn and worn correctly, however once it is powered down, normal PPE can be worn.

FOLLOW OEM PROCEDURES

Each OEM has different guidelines to follow when it comes to EV repairs. These should be followed to ensure each vehicle is repaired correctly and safely. A great habit to get in is to physically have the OEM guidelines next to you when completing the repair.

Prior to the commencement of a repair, a full assessment of the battery should be carried out by a trained technician, so that any unforeseen damage to the high voltage battery or cabling is picked up and dealt with.

WORK AT LOWER TEMPERATURES

When it comes to the refinishing process, drying at low temperatures is particularly important, due to the nature of sensitive electrics and batteries (and even tyres). In some cases, lowering the windows is advised to avoid heat build-up. As each car manufacturer has its own upper temperature limit that must be adhered to, it is essential that refinishers familiarise themselves with the manufacturer's specific recommendations at the start of the repair. As a general recommendation, drying temperature must stay below 60°C and cannot exceed 45 minutes. We've even put together a poster that summarises the things to consider.

CHOOSE SUITABLE PRODUCTS

Axalta's patented fast cure, low energy technology is ideal for EV repairs. Not only does it offer faster drying times at lower temperatures, but also outstanding results and reduced energy consumption. Using this technology, drying is possible at 40°C or even 20°C. You'll find this technology in products within the Standox, Spies Hecker and Cromax ranges.

FAST CURE, LOW ENERGY

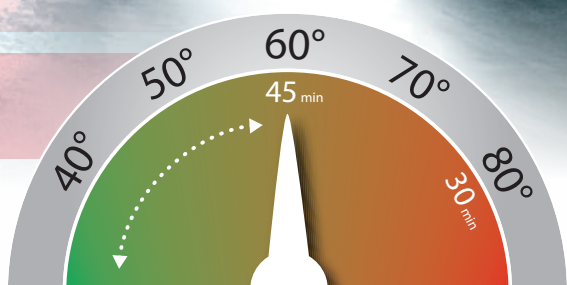
NEW DIRECT TO PLASTIC ADDITIVE

Our fast cure, low energy technology is designed to work perfectly with EVs, but it is also ideal for shops that want to increase throughput, without seeing a jump in their power bill.

We have now improved the efficiency of our fast cure, low energy system, with the introduction of a direct to plastic additive for use with low energy primers and surfacers.

There is no longer a need for a separate adhesion promoter or plastic primer to be applied. The additive allows for direct to plastic adhesion, and when used with the wet-on-wet primer, provides the required flexibility without the need for an elastic additive.

The direct to plastic additive is available across our three premium brands:



How do bodyshops manage the repair process for electrical cars?

What are their biggest challenges and how do they handle them?

Our European colleague, Tony Mitchell visited an EV approved bodyshop in the U.K. You can watch the short video here.



IMPLEMENT STANDARD OPERATING PROCEDURES

All staff working on EVs should understand the safety implications of working on EVs. Before taking on EV repairs, your bodyshop should have documented procedures in place for intake and work on EVs and all staff should be appropriately trained.

Download our “working on an EV” poster for recommendations on completing EV repairs.



**XTREME
PLASTIC ADDITIVE U7660**
for use with the
Standox Xtreme System



**SPEED-TEC
PLASTIC ADDITIVE 9260**
for use with the
Spies Hecker SpeedTec System



**ULTRA PERFORMANCE
PLASTIC ADDITIVE AZ9700**
for use with the
Cromax Ultra Performance System

For more information,
speak to your local distributor.





A GROWING BUSINESS

When Fix Auto Mulgrave (VIC) owner, Lana Pagiamtzis was looking to expand her bodyshop, she focused on finding a way to effectively support her business as it grew. Lana was keen to step back from running the shop floor to give herself more time to manage the business. Becoming a member of a successful franchise seemed to be the solution she was looking for and following a trip to Canada to visit Fix Auto's global head quarters and a number of franchise shops there, Lana decided to join the Fix Auto family.

Lana had been running her bodyshop for several years before becoming a franchisee in 2016. After joining, it became evident that there were a number of benefits to the franchise model that would support Lana to achieve her business goals.

"It can be hard for repairers to build relationships with insurance companies and this was becoming more challenging. It has been great having that corporate-level support as they do a lot of the work behind the scenes."

Once joining the franchise, the Standoblu Waterborne basecoat system was introduced into Lana's shop, with positive results.

"The guys are happy with the colours and products and we are able to move things a little bit faster. The Axalta Reps are also encouraging my painters to use the latest technology and improve productivity, which is brilliant."

Administrative support has been another benefit to Lana, giving her the freedom to manage her business instead of having to focus on elements such as computer software, advertising materials, job descriptions and many other things that can be time consuming. This has given Lana the opportunity to expand the Mulgrave business and add the new Fix Auto Clayton site to her portfolio becoming Australia's first Fix Auto multi franchise/multi-site operator. She's looking forward to expanding her business, adding a few more recruits and being as profitable as possible in the coming year.

"That's the vision," Lana concluded.

**Distributor: Jefferson Paint Supplies
Paint System: Standoblu**



RIDING WITH GOOD VIBRATIONS

Automotive coatings can be used in many different and unexpected ways - on signs, artworks and even on bicycle handles. New Zealand company, Good Vibrations Leisure is just one of the companies that has found an alternate use for Spies Hecker coatings and is taking the world of biking by storm in the process.

Their locally crafted bamboo Passchier Handlebars are finished in Spies Hecker 8045 Clear and are visually stunning and unusual. Beginning as the brainchild of Dirk Passchier - a master craftsman who makes amazing wooden products - these unique handlebars have undergone two years of research and development before being released to market just six months ago.

The bamboo construction is more than just visually appealing, but rather they also offer real benefits to riders as they are more comfortable than traditional handlebars and places less stress on the wrists and forearms.

"People initially get excited about the look," says Good Vibrations Leisure Manager Mike Baddeley. "because they look pretty sexy. And then when they ride, the bars provide a small amount of flex that metal bars don't have - no one else has created bars that have comfort built into them, so it's a really novel product in that way."

The bamboo bars are selling all around the world, gaining notable traction in the US - particularly in California and New York. However, they are all locally manufactured in-house in New Zealand, with long-term Spies Hecker user, Perfect Autobody NZ working closely with the team to complete the final application.

The bars are manufactured using 11 layers of 3mm thick bamboo, which are epoxied before they are computer-routed to shape. The bars come in a range of looks - from natural to blue to Audi metallic grey.

Top Right: Passchier handlebars prior to installation.

Bottom Right: Bamboo handlebars give bikes an impressive look.



With people looking more and more for sustainable options, these bars are perfect, as bamboo is extremely environmentally friendly. The bars have even caught the eye of a European bike hire company who are looking to utilise more sustainable materials in their business.

With their unique offering, this business has an exciting journey ahead of them.

Your Passion.
Our Coatings.

REINVIGORATED REPLICAS

While many people in the bodyshop industry have a passion for restorations – from bikes to classic cars, Marty Cantlon from Marty's High Performance Signs has a passion for old aircraft. He has finished two aircraft restorations, bringing the planes back to their former glory.

The YMF WACO had a shaky history before Marty purchased it. The aircraft crashed in Lake Travis, Texas, where it laid submerged for four days before it was retrieved from the lake bed and listed online for sale. Marty bought the damaged craft and flew to the USA to package it into a shipping container to bring back to New Zealand.

Once back in Mount Maunganui, New Zealand, Marty began meticulously repairing the damage.

"I believe I spent about 3,000 hours over a four-year time period restoring the YMF WACO in my own time," Marty says.

"The whole thing about restoring an aircraft is a challenge, nothing is ever easy! I found the support from the WACO manufacturer disappointing, which most likely comes down to the fact they are in America and we are at the bottom of the world in New Zealand so getting any parts out of the manufacturer was a mission in itself."



Most recently, Marty completed restoring a replica YMF WACO. The plane was built in the factory by WACO Classic Aircraft in Michigan in 2012 and is a regenerated 1935 design with a 300HP Jacobs R 755 radial engine.

While challenging at times, the finished aircraft is stunning, which Marty completed in Imron Fleet Line.

Previous to purchasing the blue YMF WACO, Marty also restored a red replica WACO WTW, which was finished in Imron Fleet Line HDC Wine Red with a clear coat.





WHAT IS A YMF WACO?

YMF is a model of WACO (pronounced wah-co) – the Weaver Aircraft Company of Ohio. The red WACO is called a taperwing, as the wings taper outward. Both models competed in air-racing competitions in the mid-1930s and also delivered air mail.

**Your Passion.
Our Coatings.**

For his day job, Marty's business Marty's High Performance Signs is a full service sign shop that specialises in safety and way-finding signage, trucks, curtain-siders, building signage, vehicle livery and illuminated graphics. Based near the Tauranga Airport with a large spray booth, the team also spray aircraft and associated components for a range of clients.

TECH TIPS

GLOBAL PAINT DEFECTS VIDEO SERIES

Paint defects are something that every bodyshop experiences. Knowing how to deal with them quickly and productively is essential.

That's why we have launched our Axalta Tech Tips - Global Paint Defects Series videos, focused on paint defects, with quick solutions to common defects any bodyshop might experience. The videos are being created by Axalta teams from around the world, truly making this a 'global' series.

The Axalta Australia team contributed a video in December last year, addressing a common defect issue - water spotting.

Scan the QR code to watch the videos in the series and to see our own National Training Manager, Paul Polverino discussing what you can do to prevent and repair water spotting.



FROM BARE METAL TO SHINING

Silver

Chris Arthur and the team at CSA Refinish are quickly earning a reputation for completing stunning, high-quality restorations. Established in early 2021 and situated on the Gold Coast, Chris and his wife Sarah, alongside his small, talented team have been hard at work on multiple projects.

Their latest project is a VL Walkinshaw which came to the shop for a full bare metal restoration. The owner of the vehicle was looking to protect the long-term value of the car, so he opted to undertake the full restoration.

"Old Holdens and Fords are increasing in value," Chris explained. "Doing the restoration any other way wouldn't guarantee the longevity of the job. With a bare-metal restoration, the restoration is going to last."

The team got to work, spending five months bringing the vehicle back to its former glory. After epoxy priming the vehicle, the team completed rust repairs and all the body work. They then high fill primed the car, then prepared and painted the body. After that, all the panels were painted and finally the body and panels were re-cleared, colour sanded and polished.

To achieve their impressive final result, the team primed in 5320 Performance Surfacer followed by Panorama Silver Waterborne Basecoat then finally cleared and re-cleared in 8034 Clear.

"We used the genuine Walkinshaw factory body kit, which required significant fibreglass repairs and filler work. The car was then placed on the rotisserie, so we could turn the car upside down. The underneath of the car was painted in U-POL Raptor Liner."

The VL Walkinshaw has a fully custom-built rear end and diff which was built by Spot On Performance. They also completed the fabrication, mini tubbed rear end and a fully welded roll cage.

Once the painting was completed, but before the car was fully reassembled, Chris and the team took the vehicle to the Gold Coast Car Show, where it was displayed on the Oz Trade Supplies trade stand.

"Displayed as a rolling car with no seats, the car gained a lot of interest. Although it didn't have a motor yet, the car's 20 x 13 inch Simmons rear wheels were highly photographed - they are very wide and were a great talking point for many people," Chris concluded.

Distributor: Oz Trade Supplies

Paint System: Spies Hecker Permahyd Hi-TEC

The VL Walkinshaw is a Holden sports sedan and was the first car manufactured for Tom Walkinshaw Racing's newly formed Holden Special Vehicles operation in Melbourne. A series of 500 vehicles was originally commissioned by Holden, which rose to 750 to meet demand for the vehicles. Each car was finished in Panorama Silver. The VL Walkinshaw also featured an aerodynamic design which reduced drag by over 25 per cent compared with the 1987 HDT SS Group A Commodore.





SMITH & BOYLE

AUTOMOTIVE BODY REPAIRS



A REFIT WITH A SHOWROOM VIBE

Recognising the need for a better customer experience in paint and panel shops, Mike Stanwell, owner of Smith & Boyle in Tauranga, New Zealand planned and undertook a renovation of his shop to change the perception of the industry. His vision was to create a showroom feeling for his clientele, where customers don't feel like they're in a repair facility.

The renovations involved the complete refit of a 200 square-foot building, from the floor to the ceiling, inside and out, with the creation of a customer lounge, reception areas, administration offices and workstations for the estimators.

"There's also a meeting area for our daily production meetings, an online training room, manufacture vehicle training, EV (electrical vehicle) workshop with a Tesla charging station, a new shower room and customer facilities," said Mike. "When our clients have been in an accident, they are often emotionally stressed and now they are able to relax in nice surroundings with an espresso coffee or a tea on leather lounge suites."

Below: The aim of the renovation was to create a showroom feeling.

Although the renovations were planned in pre-COVID times, the completed renovation has facilitated a new way of working.

"Although we originally planned to build a better customer care service facility, the renovations have allowed us to adapt in this COVID market - customers can safely have their own space, and there's a safe working distance between colleagues. The bathrooms and kitchen are all touchless, with sensors installed."

The updated 1950s building also has customer parking for 15 vehicles out front, allowing for safe drop off and pick up, as well as estimating of vehicles.

The renovations will support the ongoing growth of Smith & Boyle and provide a positive environment for its 20 staff and customers as they are a Recommended Repairer for all major insurance companies.

Distributor: Resene Automotive and Light Industrial Paint System: Standoblu

Below: A new kitchen area was part of the renovation.





COACH'S CORNER WITH ROBIN TAYLOR

PAINT AS A PART

In this issue's Coach's Corner, we look at treating paint as we would a part, by moving the colour identification - mix and match, up front in the planning stage of the repair process.

Traditionally, colour matching has been carried out during the paint shop process of a repair, sometimes leading to a scramble in the prep area or occasionally even the booth. If there is a specific job with time consuming work needed, this can have a ripple effect and may slow down production.

By treating paint as a part and moving the colour identification to the front end of the repair process, you will start to see improvements in work-flow within the paint shop.

So how can we implement this and what are the advantages?

IMPLEMENTATION

CUSTOMER CHECK IN

Upon customer arrival, the correct colour is identified. At this stage you can:

- Identify panels to be painted and blended when writing the repair plan
- Identify the type of paint process used (tri-stage, tinted clear) and
- Assess possible extra work to achieve the correct quality standard or technical requirements. This may require organising specialist training.

DESIGNATED AREA

Utilise a prep cart or bay within the repair planning/check-in area. Included in this area, should be a blend ruler, colour chips, colour library, spectrophotometer as well as a PC with Axalta colour retrieval software, allowing the selected colour to be sent to the scale or PC in the mixing room.

TRAINING

Training non-trade staff (estimators, check-in operatives) to identify colour code, pull spray out cards from the library and take spectrophotometer measurements, frees up time for productive, skilled paint technicians to focus on application.



ADVANTAGES

- Achieve accurate and simplified colour retrieval at the beginning of the process
- Reduce costly waste and increase profitability by creating volume usage recommendations
- Time to order any limited-use products
- Allow skilled technicians to focus on paint application, which should lead to more paint labour sales
- Minimise bottle necks in the paint repair area, increasing productivity
- Fast track the paint repair process and increasing efficiency.

Overall, by making these small changes in the way you approach the paint process in your shop, you can see some positive benefits in the whole production process.

If you need further guidance, please get in touch with the Axalta Services team.





A UNIQUE PIECE OF *Art*

What more could those lucky enough to snap up one of the twenty-eight limited edition AMG GT Black Series from Mercedes-Benz Australia ask for? How about an exclusive limited-edition artwork to match their car? That is exactly what these AMG enthusiasts received.

With the arrival of the ultimate performance car, the team at Mercedes-Benz Australia knew they needed to give the buyers something extra special to commemorate their purchase. This is where iconic Australian artist and photographer, Dina Broadhurst was able to assist in making a one-of-a-kind artwork piece for each vehicle, with a little help from Mercedes-Benz global refinish partner, Axalta.

As part of the collaboration, Dina combined her signature style over photographic works of the vehicles, using both digital and hand applied elements. The finishing touch on the pieces



was a splash of Standox's premium coatings, which perfectly matched the OEM colours used by Mercedes-Benz on the cars themselves. Each artwork was as unique as each individual car, even incorporating the BI-TURBO badging and titled with its own individual VIN number.

Not only will the owners cherish their Mercedes-AMG GT Black Series car for years to come, but they will always have their artwork to look back on - a perfect match in both colour and uniqueness.

VALUESHADE TURNS 25

Can you believe ValueShade is already 25 years old? Developed by Cromax (when it was known as Dupont Refinish), ValueShade is as relevant today as it was at its inception. Providing improved coverage via a unique concept that takes the place of traditional coloured primers, it remains one of the most popular technologies from Cromax.

The concept associates every topcoat colour with one of seven shades of grey - mixed from any of the five different greys plus white and black - to optimise topcoat coverage and thereby lower paint consumption. With a philosophy based on research, ValueShade proves it's not the colour of

the undercoat that matters - it's the value, in terms of the lightness or darkness of the undercoat, that has the most impact on the topcoat hiding, coverage and appearance.

The concept has evolved over the years to now utilise our colour retrieval software which can assist the process further, as Chromaweb will specify the right ValueShade of undercoat to use with your topcoat or basecoat, minimising preparation time.

It's easy to see why many repairers use shaded grey primers for faster coverage, lower material consumption and improved productivity.

SIGNS IN THE SKY

Signage needs to be able to last over time and in many cases, withstand the elements of nature. As Project Neon, located in Balcatta, Western Australia are in the business of creating large signage, it makes sense that they would use a paint system designed for industrial purposes - Nason Industrial.

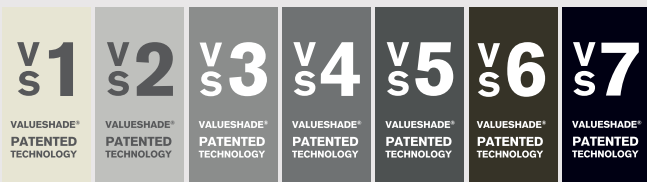
With a range of corporate customers, from Hungry Jacks to Woolworths, Shell and Crown Casino, the 25-strong team at Project Neon utilise the Nason Industrial paint system to create "sky signs" - the large signage on the side or top of tall buildings, explained Dylan Goff, Project Neon's Production Manager.

"We needed a paint that would last over the years and we discovered the Nason Industrial system is perfect for what we need. It is a great option for signage as it has longevity and is an easy paint system to use," Dylan said.

Ranging in complexity, each job varies in length - from a full exterior fit out of a Hungry Jacks store taking nearly two months, to a number of days completing eight signs for Crown Casino.

The durability of the Nason Industrial paint system ensures that Project Neon's customers will enjoy their custom-made signage for many years.

**Distributor: Park Automotive
Paint System: Nason Industrial**



A handy colour overlay tool also makes things easier for refinishers, with a transparent, coloured plastic film coated in Cromax coatings covering four different primer colours. When the film is peeled back, it might appear the lighter primer, or the primer which is a similar colour to the basecoat colour may be best, but once the film is layed down the best match ValueShade would disappear, with the others all still showing through the film.





SHANGHAI BOUND

Congratulations to Isabella Turrise, whose hard work paid off as she was crowned the gold medalist at the WorldSkills Nationals for Vehicle Refinishing. "The fact that I would be representing Australia would be pretty cool," she says. "I never thought I would be someone to represent a country."

"Mostly, I really want to just open up the minds of young women who think they would be all right or who want to have a go because we are so good at this trade it's ridiculous, but so many people don't give it a try."

Over a turbulent two years, apprentice spray painters have competed in regional and national events to vie for gold and go on to compete at the WorldSkills competition in Shanghai in October 2022 - subject to border restrictions - as part of Australia's Skills Squad.

For more than a decade, we have been a sponsor for WorldSkills Australia, sharing a common goal in recognising the exceptional talent of young apprentices who dream of becoming the 'best of the best' in their chosen trade.

We wish Isabella all the best in the next stage of her WorldSkills journey and her career in vehicle refinishing.



Above: Fred Sleman, owner of 5 Star Panels, receiving his award from Michael Kirchner, Territory Business Manager, Axalta.

CONGRATULATIONS 5 STAR PANELS

Having won multiple awards at the Paint & Panel Bodyshop Awards over the years, 5 Star Panels are now able to add the Axalta Business Excellence Award to their list of accolades.

The judges selected this shop as the winner of the 2021 award, due to their strong focus on customer care and the fact that they are constantly refining processes to boost efficiencies. They were one of the first repairers to invest in setting up an ADAS recalibration operation and have grown from a boutique shop to three sites fairly quickly. Owner Fred Sleman attributes their success to his staff and team.

"My staff and my team truly are the key to our success. Many of my staff have been with me for more than 10 years. My management team, who have been with me since the beginning, are amazing. My team embrace everything I strive to achieve and we are where we are today because of them."

COLOUR OF THE YEAR

ROYAL MAGENTA - SILKY. MAJESTIC. DYNAMIC.

These are some of the words used to describe our 2022 Global Automotive Colour of the Year, Royal Magenta. It is a deep cherry colour that brings a luxurious finish to the market, with a robust design that has a majestic dark finish engrained with merlot and garnet hues. The colour appears berry red in sunlight yet reveals a dark, mysterious look in the midnight hours.

"Royal Magenta delivers a new luxury look that is optimised for future mobility," said Hadi Awada, Senior Vice President, Global Mobility Coatings at Axalta. "With innovative mobility-sensing and environmentally-optimised waterborne technologies, we're helping the mobility industry transition toward increasingly sustainable solutions, electric vehicles and autonomous driving."

Royal Magenta is formulated for all vehicle types and enriches the mobility palette with alluring colour. It is stylish and functional and is engineered to work with radar systems used on autonomous vehicles of all sizes.

"This year, we have designed a complex-looking colour that can be applied in a simplified manner," said Nancy Lockhart, Global Product Manager of Colour at Axalta.

"The design process began by tinting waterborne paints with various layering systems to provide depth and colour. With sustainability in mind, the end colour was achieved with a conventional basecoat - clear coat layering. It's as easy on the eyes as it is to apply."

You, too, can have Royal Magenta.

See the below paint codes:

Standex: 1808702

Spies Hecker: 8007128

Cromax: 1028087



Scan the QR code for more on Royal Magenta and our 2021 Colour Popularity Report.

ROYAL MAGENTA



30 YEARS WALLABY CRASH SUPPLIES

Thirty years is an impressive milestone for a business to reach, and this year Wallaby Crash Supplies have joined the ranks of other successful businesses to achieve this. Located in Wetherill Park (NSW), this family business started trading in 1992 and today has 20 employees who have all contributed to the success of the business.

Operated by owners Jim and Janelle Crisp, they place a strong emphasis on customer service in running their business "Wallaby is built on long-term relationships and trust. We believe in the highest standard of customer service," said Jim and Janelle.

Paramount to achieving this high level of customer service, are the team of hard-working and loyal staff members. Clearly a fantastic place to work, the team is filled with long-term members who have been with the company for decades.

"Without the involvement and knowledge of our long-term staff and the other employees at Wallaby, who are all crucial to the day-to-day running of the business, Wallaby would not be where it is today," said Jim and Janelle.

The core business of Wallaby Crash Supplies is supplying Axalta Coatings to independent smash repairers, in addition to the Industrial, Aviation and Marine sectors.



Above: Team members from Wallaby Crash Supplies.

With the introduction of Cromax Pro waterborne paints to the industry, Wallaby expanded with the purchase of another industrial unit to warehouse the increasing product range required to service customers.

Last year, Wallaby also added the Standox brand to their already impressive range of products and Wallaby is looking forward to continuing their growth and providing their customers with great service and great brands in the years to come.

"The industry has seen some hard times over the last 30 years. We believe those businesses that have survived are now in a position to benefit from all the hard work and changes they've had to endure and Wallaby will be around for another 30 years to support them," concluded Jim and Janelle.

ENHANCE YOUR WORK

Sontara wipes help you get the job right the first time and enhance the quality of your work. **Customer favourite, the Static Control Wipe**, is perfect for the control of static build-up. By giving the surface a thorough clean and reducing static charge, which minimises the attraction of dirt, there is a lower risk of paint defects. These are ideal to use for small repairs on plastic, such as a bumper bar touch-up to reduce static.



These wipes are pre-sealed in individual packs for added convenience and are pre-saturated with 70/30 blend of isopropyl alcohol/de-ionized water.

Sontara Static Control Wipes are available from Axalta Distributors throughout Australia.

Sontara®

RECOGNITION AWARDS

25 YEARS WADLEY'S PANEL BEATERS

Wadley's Panel Beaters, located in Rockingham (WA), is celebrating 25 years using the Standox paint system. This family business was established 50 years ago and is run by Julie Wadley.

The successful business was started in a smaller shop but later expanded when the Wadleys purchased an indoor cricket centre and converted it into a Smash Repair shop. Julie attributes their long-term success to outstanding customer service.

"We focus on customer service and a high quality of work. Customer satisfaction is very important and we always keep the owners informed at every step so they are aware of where their job is at."

Undertaking major smash repairs, the quality of the paint system is important to achieve the quality outcomes which underpin the business.

"We love the Standox product - it's user friendly, efficient and very easy to apply. It's waterborne and environmentally friendly. We were the first shop in Western Australia to install the system. We also think the colour matching is excellent, and the technical support from Axalta is brilliant," Julie concluded.



Above: Team members from Wadley's Panel Beaters.

35 YEARS **SPIES HECKER**
Rex Davies Crash Repairs PORT AUGUSTA SA

30 YEARS **SPIES HECKER**
RW & DA Carins LAUNCESTON TAS
AXALTA
Wallaby Crash Supplies WETHERILL PARK NSW

25 YEARS **STANDOX**
Wadley's Panel Beaters ROCKINGHAM WA

20 YEARS **CROMAX**
Adroit Panels BALLARAT EAST VIC

15 YEARS **SPIES HECKER**
G Moro Accident Repair Centre KANGAROO FLAT VIC

10 YEARS **SPIES HECKER**
Suburban Smash Repairs ELLENBROOK WA
CROMAX
Ormeau Panel and Paint ORMEAU QLD
AXALTA
K&S Freighters MT GAMBIER SA
Scott Street Panel Works CAIRNS QLD

5 YEARS **SPIES HECKER**
Alfa Smash Repairs CAMPBELLFIELD VIC
Badhams Panel Beating Works MAROOCHYDORE QLD
O'Briens Smash Repairs WEBBERTON WA
Roger Manson Panels DROUIN VIC
Wayne Davies Smash Repairs MYAREE WA
CROMAX
AUS Smash Repairs BASSENDEAN WA
Champs' Bodyworks SLACKS CREEK QLD
Country Paint Supplies NARROGIN WA
Superformance CAPALABA QLD
AXALTA
Just Trucks Smash Repairs DEER PARK VIC
Under XS Panel & Paint OSBORNE PARK WA



Go! Get Linked with our Apps!

Axalta's new apps for premium paint brands Standox, Spies Hecker and Cromax make accessing information easier than ever. From your mobile device, you can easily retrieve the latest product information, technical and safety data sheets or watch training videos (and more) without needing to leave the bodyshop floor.

Simply download the apps from the Apple and Google Play stores. Search **Standolink** for the Standox App, **Spies Hecker Go!** for Spies Hecker and **Croma-App** for Cromax.

